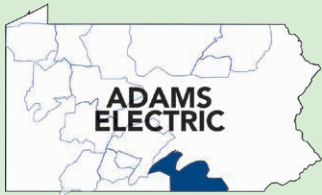




Adams Electric Cooperative, Inc.

A Touchstone Energy® Cooperative 



One of 14 electric cooperatives serving Pennsylvania and New Jersey

BOARD OF DIRECTORS

Glenn E. Bange, President

Nadine M. Hubner, Vice President

Dale E. Myers, Secretary

Thomas J. Knaub, Treasurer

David A. Frey

Jay E. Grove

Jay A. Herman

S. Eugene Herritt

F.L. "Ray" Schwartz

Steve Rasmussen

CEO/General Manager

ADAMS ELECTRIC COOPERATIVE, INC.

1338 Biglerville Road
P.O. Box 1055
Gettysburg, PA 17325-1055
1-800-726-2324

GETTYSBURG DISTRICT

1338 Biglerville Road
Gettysburg, PA 17325

YORK DISTRICT

200 Trinity Road
York, PA 17408

SHIPPENSBURG DISTRICT

10 Duncan Road
Shippensburg, PA 17257

DISTRICT OFFICE HOURS

Monday through Thursday
7 a.m. - 5 p.m.*
*By appointment only

Check out adamsec.coop

Like us on Facebook at
[Facebook.com/AdamsEC](https://www.facebook.com/AdamsEC)

LOCAL PAGES EDITOR:
Kami Noel, CCC

This institution is an equal opportunity provider and employer.

KNOCK! KNOCK! Prove It!



IT'S 1980, AND A KNOCK on the front door sends a rush of footsteps to see who it is. You throw open the door and see a man in a police uniform who says, "Hi, I'm Officer Jones, may I come in?" "Come right in," is the prompt reply.

KNOCK! KNOCK! It's 2023, and the knock on the front door sends quiet footsteps to a side window. You see a man in a police uniform. "Is that what a real badge looks like?" you think to yourself. You glance toward the driveway. "That car does look like our local police cars." You may even pick up the phone and call the local station to confirm the officer's identity before opening the door and saying hello.

In the last 40 years, how we handle strangers and unexpected situations has greatly changed, whether it is a stranded motorist, a stranger at the door, or a phone call. Our ability to trust people at face value has been overshadowed by our concerns for safety and the need to confirm people through other sources.

As trust has receded in the real world, so has trust receded in the virtual world. Gone are the days of systems without passwords and trusting that people accessing systems are there for honest reasons. Every day, there are new reports of breaches and hacks exploiting poorly protected computer systems and their vulnerabilities.

The good news is that just as you can do things like put up cameras and check the driveway to help protect your home, there are tools that can help you protect your virtual information and assets. One of the most powerful tools is called multi-factor authentication (MFA). This process requires more than one piece of information to gain access. Usually, you'll be asked to provide two things from these categories: something you know (like a password or PIN number), something you have (phone, USB key) or something on your person (fingerprint, facial recognition).

Older systems may have required just a username and password to access a bank account. Newer systems now allow (or require) you to provide something in addition to that, whether it's a fingerprint scan or a code sent to your phone. These may initially seem like unnecessary inconveniences; however, these secondary steps vastly improve the protections on your accounts. Adding a second step now requires a criminal to know your username and password (which may have been previously acquired), and have access to your phone (or finger) to complete the login process.

In 40 years, we have grown to require multiple pieces of information before trusting a person or situation in the real world (police uniform + police car + confirmation from police station = real police officer). I would encourage you to take that same mindset into your virtual world. Put MFA on as many accounts and devices as you can. Make it that much harder for a criminal to pretend to be you. One extra click by you can stop a criminal in his tracks.

Are your electronic accounts safe? **KNOCK! KNOCK!** 🚪

KYLE SMITH

MANAGER, INFORMATION TECHNOLOGY



Culinary Trails Gaining More Traffic

KAMI NOEL, CCC, COMMUNICATIONS/
MEMBER RELATIONS COORDINATOR

FOOD IS OFTEN THE FOCAL point of a good getaway, and the niche of culinary tourism is growing in popularity. From Wisconsin’s cheese trail to New Jersey’s pizza trail, there is a map to showcase most anything. There’s even a fermented foods trail through Pennsylvania for pickle lovers.

“With the culinary trails, it’s a great way to package dining experiences together and explore new places,” says Aaron Jumper, public relations manager for the Cumberland Valley Visitors Bureau. “We’re not expecting everybody to be a foodie, but whether beer, coffee, or chocolate ... the trails are a fun way to explore and find new flavors.”

Cumberland Valley (CV) includes parts of Adams Electric’s Shippensburg District, including Carlisle, Newburg, and Neville, but extends all the way to the “West Shore” of the Susquehanna River, and parts of Enola, Camp Hill, and Mechanicsburg.

The visitors bureau has been helping to build trails along

its corridor for several years now, with the most popular being its beer trail, which started in 2017. The trail includes more than 25 breweries, wineries, cideries, and distilleries, and often a beverage-of-the-month promotion.

“This year’s mobile passport opens April 7, National Beer Day, and continues through March 2024,” Jumper explains. “Al’s of Hampden in Enola and Ever Grain in Camp Hill are very popular stops ... also The Winery at the Long Shot Farm and Grand Illusion Hard Cider, both in Carlisle.”

Another culinary option Jumper is very excited about is the Cumberland Valley Coffee & Chocolate Trail, which opened Feb. 1 and runs through May 31. This is the trail’s inaugural season, and there were more than 1,000 sign-ups for trail passes in the first week.

“That’s a stat we’re really proud of,” says Jumper. “That’s families and groups and people of all demographics bringing business to local shops.”

There are 16 locations on the trail, including Denim Coffee and Mummert Chocolates, both in Carlisle.

“These are great meeting places — or quick stops — and perfect for the season with warm drinks and sweet, unique treats,” Jumper notes. “Macris Chocolates on the West Shore just did a whole line of Eagles chocolates for the Super Bowl. It’s a great show of the skill and ability of the local businesses we have right here — even with one of the world’s largest distributors of candies right nearby.”

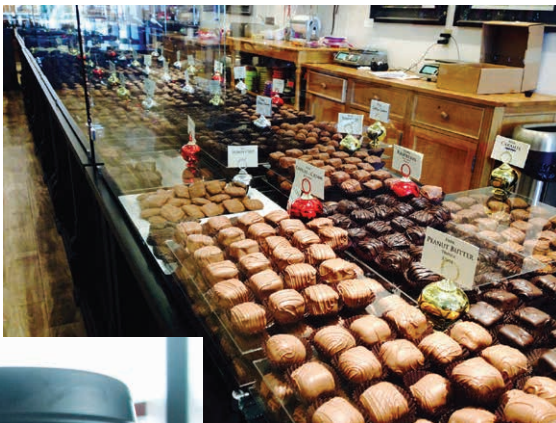
If you need some adventures for the summer months, just as the chocolate trail winds down, the CV Ice Cream Trail will reopen. In its third year, there are 22 stops on the trail, which begins Memorial Day weekend and ends Labor Day weekend. Some of the highlights of this tour include Goose Bros. Ice Cream in Shippensburg, Twirly Top in Gardners, Kristy’s Whistle Stop in Enola, Leo’s Homemade Ice Cream in Carlisle and Urban Churn Craft Creamery in Mechanicsburg.

“These aren’t your typical Hershey’s ice cream stops,” says Jumper. “Some of these are unique, handmade ice creams.”

Each of the Cumberland Valley culinary trails requires a mobile passport to participate. These can be downloaded at visitcumberlandvalley.com. Once registered, participants use a check-in feature when they arrive at each stop on a trail and receive a special code.

“After five check-ins on a trail, you get a key chain, and then after 10, you get a travel ring to add to the key chain,” Jumper explains. “Each trail has its own additional perks, too.

“Culinary trails are a great way to package dining experiences together and explore new places.”



SEASONAL STOPS: The Cumberland Valley Coffee & Chocolate Trail is in its first season, with more than a dozen possible stops, including the Cornerstone Coffeehouse in Camp Hill and Macris Chocolates in Lemoyne. More than 1,000 users have downloaded the mobile passport for the trail.

PHOTOS COURTESY OF CUMBERLAND VALLEY VISITORS BUREAU



Three Incumbent Directors Seek Re-election

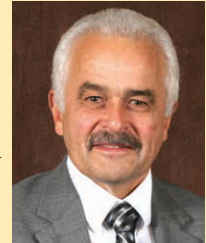
The Credentials & Election Committee has certified three candidates to run in Zones 3, 4 and 9, respectively, for a chance to serve on the Adams Electric board of directors. Below is a brief excerpt from each candidate's petition packet. For additional information about each candidate, visit adamsec.coop.

Meet the candidates

Zone 3: Glenn E. Bange of Hanover has been a member of Adams Electric since 1977 and a director of the cooperative board since 2005. He currently serves as board president. He has served on various committees for the cooperative through the years, including executive, board performance, budget and audit.

Bange is a Credentialed Cooperative Director and has earned the Board Leadership Certificate and Director Gold Certificate from the National Rural Electric Cooperative Association (NRECA). He is a director of Adams Utility Service Company (AUSCO), a subsidiary of Adams Electric.

He has been married to his wife, Doris, for more than 51 years. They have three children and five grandchildren. He enjoys outdoor activities, such as yard work, hiking, camping, hunting and ATV riding.



Candidate Statement: "I am seeking to continue my position on the Adams Electric Cooperative board to look out for the best interest of the members by making decisions so members can enjoy the advantage of reliable and affordable energy."

Zone 4: Thomas J. Knaub of Wellsville has been a cooperative director since 1999 and has served as board treasurer since 2005. He has served on various committees for the cooperative through the years, including the board's executive, governance, board performance, strategic planning, budget, audit and finance committees.

Knaub is a Credentialed Cooperative Director and has earned the Board Leadership Certificate and Director Gold Certificate from NRECA. He also serves as a Mid-Atlantic Cooperative Solutions (MACS) director and the AUSCO board treasurer, and is a member of America's Electric Cooperatives PAC and Co-op Owners for Political Action.

After 40 years, he retired from the International Brotherhood of Electrical Workers (IBEW) Local 229 as a regional

superintendent, with 39 years of service at I.B. Able, Inc.

He and his wife, Jane, enjoy spending time with family, riding horses, skiing, camping and spending time on their farm. They have three grandchildren.



Candidate Statement: "Since being elected in 1999, I continue to remain focused on the primary goals of providing excellent representation to the membership, while being attentive to the challenges that we face in the future. It is important to show constant and steady leadership while being open to new technologies and ideas. I consider it a privilege to serve on the board."

Zone 9: David A. Frey of East Berlin was appointed as a cooperative director on Jan. 1, 2021, and has been a co-op member since 2001. He is a Credentialed Cooperative Director through NRECA.

Frey is retired after a career as president/CEO of POST-MARK Credit Union in Harrisburg. He holds a bachelor's degree in accounting from York College.

As an Adams Electric volunteer, he served six years on the Member Advisory Committee (now MEG — Member Engagement Group) and one year on the Credentials & Election Committee.

He and his wife, Karen, have one daughter, Alexa.

Candidate Statement: "I have served as a director for two years and would like to continue in this role. I have obtained the Credentialed Cooperative Director certification and continue my progress toward the Board Leadership Certificate along with experience and exposure to most of the board's committees. My career experience with cooperatives and a degree in accounting provide me with management and accounting knowledge. I can also commit the time needed to be an effective and productive director."



CO-OP TO HOST ANNUAL MEETING EVENTS MAY 18

This announcement constitutes the official notice of the Adams Electric Cooperative Annual (Business) Meeting to be held Thursday, May 18, at 6:45 p.m. on the Adams Electric Cooperative campus, 1338 Biglerville Road, Gettysburg. The day also includes three drive-thru events, one in each of the cooperative's three districts, from 2 to 6 p.m. Preregistration required for all activities.

All active memberships are invited to attend and bring their immediate family (those residing with you). However, to-go meals will only be provided for those registered and present.

The business meeting will be in-person with brief reports given by the board president and the co-op's CEO/general manager as well as a representative of the Credentials & Election Committee. The meeting will begin promptly at 6:45 p.m. at the Adams Electric office, 1338 Biglerville Road, Gettysburg.



DRIVE BY AND SAY HI!: Adams Electric will host three simultaneous drive-thru events on May 18 from 2 to 6 p.m., followed by one annual business meeting at 6:45 p.m. at the cooperative's campus in Gettysburg. The business meeting will culminate the day's events.

Prior to the business meeting, three simultaneous drive-thru events will take place, one in each cooperative district. Each will be held from 2 to 6 p.m. The locations for those gatherings are:

- ▶ 1338 Biglerville Road, Gettysburg;
- ▶ 200 Trinity Road, York; and
- ▶ 10 Duncan Road, Shippensburg.

Each membership must be preregistered to attend. Registration requires selection of a one-hour time slot. During the drive-thru, all visitors must remain in their vehicles for safety and ease of participation. Registered attendees will receive a goodie bag and meal to take home.

Up to five expired lightbulbs may be exchanged for new LED bulbs at the lighting station.

Members who have not voted in the director election will be provided a ballot.

Memberships registered by April 15 will receive a confirmation postcard by mail the week of May 10. PLEASE bring this card with you to the event for check-in. It will have a personalized barcode that will need to be scanned. It will also list your registration location and assigned time slot. To register online, visit adamsec.coop/2023-annual-meeting.



Need Help Paying Your Bill?

AS OF FEB. 28, THE Low Income Energy Assistance Program (LIHEAP) has increased its allowances for crisis support from \$1,000 to \$2,000 for those struggling to pay their energy bills. Call the LIHEAP hotline at 1-877-537-9517 for more information.

LIHEAP helps families living on low incomes to pay their heating bills through a cash grant. The funds are sent directly to Adams Electric on behalf of the member and will be credited toward their electric bill.

Crisis considerations include broken heating equipment, leaking lines that require repairs or replacements, and/or accounts in danger of having utility service terminated because of overdue or unpaid bills.

Funds are limited. Apply online at compass.state.pa.us or contact the assistance office in your county:

- ▶ Adams - 334-6241
- ▶ Cumberland - 240-2700
- ▶ Franklin - 264-6121
- ▶ York - 771-1100.

Need additional assistance? Talk to a member services representative at the co-op about available Project Helping Hand funds or payment assistance for past-due balances. Call 1-800-726-2324. 📞



Wesley Ashton



Tony McCauslin

Engineering Department Promotes Staking Techs

WESLEY ASHTON OF SPRING GROVE was promoted to staking technician B in the Engineering-Mechanical Department at the Gettysburg District on Jan. 23. He started with Adams Electric in February 2022.

Tony McCauslin of Biglerville was promoted to staking technician A in the Engineering-Mechanical Department at the Gettysburg District on Feb. 6. He started with Adams Electric in April 2008. 📞



SYSTEM UPGRADES: Shippensburg crews work along Creekview Road, Whiskey Run Road and Brandy Run Road in Newville. The lineworkers are removing 1.5 miles of cross-country power line and constructing two short tie lines closer to the road. The project will increase service reliability and reduce outage time by making the line more accessible in the event of an outage.

CELEBRATE
the Power Behind Your Power.
Lineworker Appreciation Day | April 10, 2023