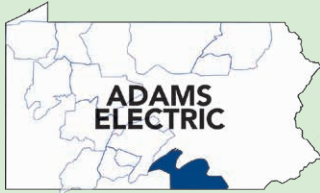




# Adams Electric Cooperative, Inc.

A Touchstone Energy® Cooperative 



One of 14 electric cooperatives serving Pennsylvania and New Jersey

## BOARD OF DIRECTORS

- Glenn E. Bange, President**
- Nadine M. Hubner, Vice President**
- Dale E. Myers, Secretary**
- Thomas J. Knaub, Treasurer**
- David A. Frey**
- Jay E. Grove**
- Jay A. Herman**
- S. Eugene Herritt**
- F.L. "Ray" Schwartz**

**Steve Rasmussen**  
CEO/General Manager

## ADAMS ELECTRIC COOPERATIVE, INC.

1338 Biglerville Road  
P.O. Box 1055  
Gettysburg, PA 17325-1055  
1-800-726-2324

## GETTYSBURG DISTRICT

1338 Biglerville Road  
Gettysburg, PA 17325

## YORK DISTRICT

200 Trinity Road  
York, PA 17408

## SHIPPENSBURG DISTRICT

10 Duncan Road  
Shippensburg, PA 17257

## DISTRICT OFFICE HOURS

Monday through Thursday  
7 a.m. - 5 p.m.\*  
\*By appointment only

Check out [adamsec.coop](http://adamsec.coop)

Like us on Facebook at  
[Facebook.com/AdamsEC](https://www.facebook.com/AdamsEC)

LOCAL PAGES EDITOR:  
**Kami Noel, CCC**

*This institution is an equal opportunity provider and employer.*

## Become a Co-op Volunteer



**STEVE RASMUSSEN**

**A RESIDENTIAL MEMBER CALLED THE** co-op recently with questions about our solar connection options. One of our managers spoke with him about the required contract and interconnection agreements. They also discussed how we equitably net meter accounts so all members aren't absorbing the costs from the alternative generation choices of another.

The conversation went well, and it was a great exchange of questions and information. The member then asked how they were supposed to know any of this without a phone call to the cooperative. That led to another great discussion about co-op

opportunities and member volunteers.

April happens to be National Volunteer Month, but we have many other opportunities for our membership to engage with our employees and staff. You can find us in the grocery store and ask us a question. You can find us at a local ball game and approach us there. While you might not run into the exact person with the perfect answer, they can refer you to the right employee.

In addition, we have committees of volunteers who spend their spare time serving the co-op, and we honor that time with a small credit toward their energy bill. It's a win-win.

We have a committee that oversees the director election process and a committee that oversees the recommendation of undergraduate and adult scholarship winners. These members serve terms on those committees and typically attend less than five meetings a year.

Committee members are drawn at random from our volunteer list, which any member can add their name to at any time. Volunteers will receive a letter when a member is needed to fill an open committee seat. You have the option to put your name in the running or decline. Whether you accept the committee seat or not, your name will remain on our volunteer list.

Members on the volunteer list also receive an invitation to a Member Engagement Group (MEG) event. This open forum typically includes a meal and interactive discussions with co-op board, staff, and employees. The only other way to earn an invite to this event is as a member of the co-op's political action committee, America's Electric Cooperatives PAC.

Our MEG meetings are more intimate than our large member meetings in March or our annual drive-thrus and business meeting in May. (Quick plug: Drive-thru and business meeting registration is open through May 8.) The topics of discussion are more specific and often focused on the requests of members who will be attending. So, our member who called with solar questions would have had a great forum to discuss the issue and receive public feedback. As the group's name implies, the conversations are meant to be engaging.

If being a more engaged member of the co-op sounds like the right choice, call our office and ask a member services representative to sign you up to be a co-op volunteer, or add your own name to the list at [adamsec.coop](http://adamsec.coop). Remember: A few hours of time for a few dollars off your electric bill can't be a bad deal. 🇺🇸

**STEVE RASMUSSEN**  
CEO/GENERAL MANAGER

## Camp Eder Offers Summer Programs and Much More

**KAMI NOEL**, CCC, COMMUNICATIONS/MEMBER RELATIONS COORDINATOR

**“SET THE BAR HIGH** and see how it rolls out.”

Denny Turner, facilities director for Camp Eder in Fairfield, Adams County, lives by that motto, helping steer a tight ship on an even tighter budget. Located on 485 acres along Mount Hope Road, the camp is a member of Adams Electric.

“We’re people on fire for the Lord,” Turner says. “We run retreats, summer camps, senior days — all non-denominational and with only three paid staff.”

The co-op has made monetary donations to Camp Eder over the last few years to help with maintenance projects that keep the camp thriving. From helping to finance materials for wheelchair ramps and new cabin flooring, the co-op has invested in the Christian camp and retreat center.

With summer coming quickly, there’s always work to do. The camp calendar has five weeks of adventures for kids from grades K-12. Whether it’s cooking, art, science, rock climbing or filmmaking, there’s something for everyone.

“We even host a Shining Stars session for campers with special needs for ages 15-plus,” Turner says. “It’s one of our favorite weeks.”

Camp Eder provides specially trained staff and

counselors to facilitate each memory-making experience — and these excursions come at a price. Costing an average of \$600 per camper, the full fee is not passed on to the families. Most camps cost an average of \$350 for six days of lodging, meals and activity.

“Seventy-five percent of our campers have never seen a church, and half can’t afford a camp without a scholarship,” Turner says. “Our board believes everyone deserves an opportunity to follow Jesus and explore the great outdoors.”

To offset the costs, Camp Eder hosts a golf tournament (May 10), Fall Fest (Oct. 19), and Christmas Festival of Lights (Dec. 13-14) to raise funding. In addition, most of the camp maintenance is done by volunteers.

“We’ve replaced four miles of roofing since I started here,” Turner explains. “We were told it would cost us \$120,000 to replace one roof; we did 20 roofs for that with the help of volunteers and supporters like A.B. Martin Roofing Supply in Newville and others.

“We raised \$4,000 to tile, grout and mud two cabin floors and the lodge,” Turner adds. “At \$5 a square foot, we shouldn’t have been able to do it, but the owner of Conestoga Tile in Hanover told his salesman to make it work, and they did.”

Turner believes God had a hand in bringing him to Camp Eder, and the rest, he claims, is a labor of love. This year, some of that labor — along with some grant writing and fundraising — will go toward paint for the Tree of Peace Lodge (\$1,500), the addition of monkey bars and a climbing tower at the playground (\$1,300), new pathway lighting (\$1,000), repairs for the on-site sewage treatment plant (\$1,000), and various heating and cooling upgrades in the cabins (\$800-\$1,000 each).

“It’s donations and sponsors and volunteers that help us become more,” Turner says. “We need to become more. Our camp is not just for campers. We exist to be used to transform the lives of our community.”

Learn more about Camp Eder at [campeder.org](http://campeder.org).



**MORE FLOOR:** Camp Eder Facilities Director Denny Turner stands on the new flooring in Mack Cabin, a project made possible thanks to funds donated by Adams Electric and others last year. Funding also helped volunteers secure enough tile, grout, and a cutter to lay new tile floors in another cabin and the camp’s lodge.

# Members Run for Open Board Seats

**THE CREDENTIALS & ELECTION** Committee certified four candidates to run in Zones 1, 5 and 8, respectively, for a chance to serve on the Adams Electric Board of Directors. Below is a brief excerpt from each candidate's petition packet. Voting is now open by mail and electronically via SmartHub. Members can vote for up to one director in each zone. Voting closes May 8, but in-person voting will be available at the cooperative's annual meeting drive-thrus and business meeting. For additional information about each candidate, visit [adamsec.coop](http://adamsec.coop).

## Meet the Candidates

### Zone 1: F.L. "Ray" Schwartz of



Fairfield has been a member of the co-op since 1994 and a cooperative director since 2006. He has served on various cooperative committees

through the years, including current assignments to the Audit Committee and Strategic Planning Committee.

Schwartz is a Credentialed Cooperative Director and has earned the Board Leadership and Director Gold certificates from the National Rural Electric Cooperative Association (NRECA).

Schwartz is a graduate of the U.S. Military Academy, West Point, and a Vietnam combat veteran. He has a master's degree in engineering management from George Washington University. He is a retired nuclear engineer with 35 years of experience in the nuclear industry, including licensing nuclear plants, refueling submarines, Three Mile Island cleanup, and U.S. Department of Energy Office of Science programs in energy research, production, and distribution.

Schwartz has served as a board trustee for the Adams County Library System for 12 years. He and his wife, Patti, have been married 55 years.

They have two children and two grandchildren.

### Zone 1: George A. Weikert of



Gettysburg is a lifelong resident of Adams County and has lived in Zone 1 for many years. He has also been involved in community service for many

years, having served on soccer club, little league and church boards. He has also served on a local school board, the township board of supervisors and the county board of commissioners.

He and his wife, Sandy, served on the co-op's Member Advisory Committee and have attended the cooperative's recent MEG (Member Engagement Group) gatherings. They also attend co-op annual meetings.

Weikert graduated from Gettysburg High School and attended Penn State University. He retired from the United Telephone Company of PA in 2008. He was elected to the Adams County Board of Commissioners in 2008 and worked for Henkels and McCoy from 2011 to 2015. He is currently conducting pole line audits for Brightspeed.

He and his wife have four grown children: Jeni, Adam, Ben and Owen. Their proudest moment is seeing their children graduate from college and pursue great and rewarding careers.

### Zone 5: Dale E. Myers of Glenville



grew up on a farm in West Manheim Township, York County, about one mile from where he lives currently. The

board's current Zone 5 director, he also serves on the Manheim Township Planning Commission. He served 27 years on the South Western School District Board of Directors, including 21 years as board president. He also served on the District Three Board of Directors of the Pennsylvania Interscholastic Athletic Association (PIAA) for 16 years.

Myers is in his second, three-year term on the Adams Electric board. He graduated from South Western High School in 1971 and earned an associate degree in surveying technology in 1973 and a bachelor's degree in civil engineering in 1977, both from Penn State University. He was inducted into the South Western School District Hall of Excellence in 2017.

Myers and his wife, Carol, have been married for 45 years. They have five children — Christy, Matt, Andrew, Brandon and Megan — and seven grandchildren.

### Zone 8: S. Eugene Herritt of



Shippensburg has been a member of Adams Electric since 1976 and a board member since 1985. He served as board president from 1993

to 2007 and on the board's executive committee from 1993 to 2011.

Herritt is a member of the Pennsylvania Rural Electric Association Board of Directors (our statewide trade association), where he serves as treasurer and is a past chairman. He has been chairman of the Adams Utility Services Cooperative, which is Adams Electric's for-profit subsidiary, for more than 20 years and serves on the board of the Mid-Atlantic Cooperative Services Co., a partnership between Adams Electric and Choptank Electric Cooperative, which own Aero Energy.

He is a member of the NRECA Board of Directors, where he represents Pennsylvania's cooperatives, and serves on multiple committees of that organization. He is a Certified Cooperative Director and holds Board Leadership and Director Gold certificates.

He and his wife, Sally, have a daughter, Andrea, and a grandson, Lyric. 📧

## Co-op Returns \$2.7 Million in Ownership Rewards

**ADAMS ELECTRIC'S BOARD** of Directors voted in February to return \$2.7 million in patronage capital credits, known by co-op members as "Ownership Rewards." This brings the amount returned for all years to over \$55 million.

"Ownership Rewards are just one benefit that makes the cooperative business model different," says Glenn Bange, board president. "This return represents our members' ownership in the cooperative, and returning these margins helps us fulfill our mission of improving the quality of life in the communities we serve."

Issued as a check and mailed in March, Ownership Rewards are a benefit of being a current or

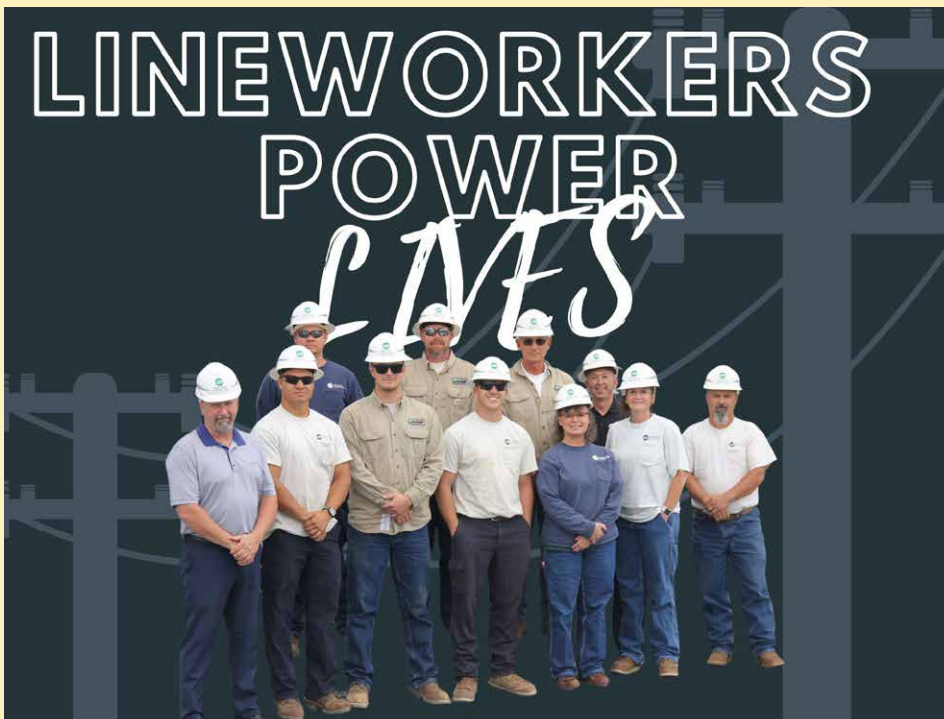
former consumer-member of an electric cooperative. For more than 50 years, members have received a return on their investment in Adams Electric based on their share of the cooperative's net profits. Members who move off co-op lines will continue to receive Ownership Rewards until their investment is completely returned. Each investment is based on a member's total use of kilowatt hours over the lifetime of their membership.

Past recipients have asked about options to donate their Ownership Rewards. Recipients may choose to donate these rewards to other cooperative members in need through the co-op's Project Helping

Hand (PHH) program. Current and former members may forward their Ownership Rewards checks by signing the back, indicating for deposit to "ACCF PHH," and returning the check to Adams Electric. All PHH donations will receive an acknowledgement letter from the Adams County Community Foundation (ACCF), which helps administer the program funds.

Adams Electric Cooperative is a not-for-profit, member-owned electric distribution utility serving 34,000 member accounts in Adams, Cumberland, Franklin, Perry and York counties. For more information on Ownership Rewards or Adams Electric, call 800-726-2324. 📞

## Resolution Recognizes Lineworkers

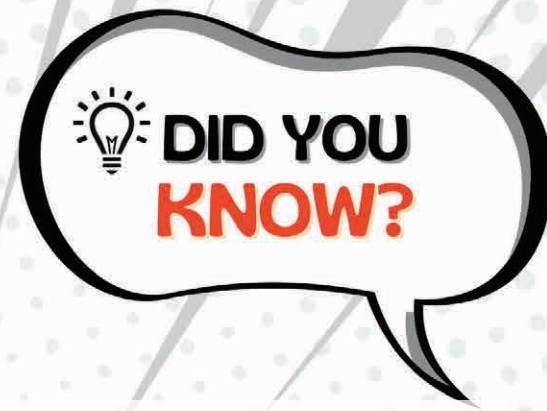


**#THANKLINEMEN:** Members of the co-op's operations departments in Shippensburg and Gettysburg, as well as the York District line crew shown above with Operations Manager Mike Feathers, left, the co-op's warehouse clerks and York District Superintendent Shawn Dehoff, back right, help to power the lives of our members every day. First declared in April 2017, National Linemen Appreciation Day this year is April 8.

*"Whereas linemen leave their families and put their lives on the line every day to keep the power on; Whereas linemen work 365 days a year under dangerous conditions to build, maintain and repair the electric infrastructure; Whereas linemen are the first responders of the electric cooperative family, getting power back on and making things safe for all after storms and accidents; and Whereas there would be no electric cooperatives without the brave men and women who comprise our corps of linemen; Therefore be it resolved that the National Rural Electric Cooperative Association recognizes the second Monday of April of each year as National Lineworker Appreciation Day and ... recognizes the contributions of these valuable men and women to America's Electric Cooperatives."*

# Co-op Spotlight

## Getting to know your employees and directors



### Rebecca Witherow



**Who am I:** I started at Adams Electric in 2009 as a service dispatcher. In 2011, I became a member services representative and, in 2012, a member services coordinator. I continue to assist our members with a variety of questions and concerns by phone and in the office. In addition to helping our members, I work alongside the member services representatives in our three office locations.

### Tom McMaster



**Who am I:** I have worked at Adams Electric for 14 years. I began my career here as a staking technician in 2010 in the engineering department and was promoted to field design coordinator in 2017. My responsibilities include the supervision of the staking department, as well as the layout, design and improvement of our electric distribution system. I am a lifelong Adams County resident and have an associate degree in mechanical engineering technology from Penn State York. I also serve on the board of directors of the PA One Call System.

**Family life:** I live in the Hanover area with my wife, Tina, and our miniature dachshund, Kota. I'm from a family of seven children, and my parents still live on Adams Electric's lines in the house we grew up in, just outside of Bonneauville. We have a son, Jason, and daughter-in-law,

### Sarah Frank



**Who am I:** I am a communications/community relations coordinator at the co-op. I have been with the co-op since 2011 in the communications department and hold my Certified Cooperative Communicator certification. At the co-op, I handle our website and social media pages, brochures, and publications, such as the annual report. I also oversee many of our employee committees and events, including the member meetings in March.

**Family life:** Outside of work, I spend most of my time with my husband and two children. I volunteer for my

**Favorite part of the job:** Working with our members day in and day out.

**Co-op difference:** Our members! They are at the forefront of the decisions we make.

**Co-op stands out because:** The service to our members — from a live person answering the phone to the response times for outage restoration.

Jess, and their two boys, Gage and Easton. We also have a daughter, Emily, and son-in-law, Zach, and their two dogs, Finn and Cooper. We enjoy anything to do with spending time with our family, especially attending our grandsons' sporting events and our annual beach trip. My favorite hobby is hunting and anything outdoors. We are also huge Notre Dame football fans and enjoy watching and attending their games. Go Irish!

**Co-op difference:** With Adams being member-owned and smaller than the local investor-owned utilities, it provides us opportunities to work very closely with our membership. We often hear comments from our members who, when they call our office, are always able to speak to an actual person, not a machine. We are continuously working on updating and increasing the reliability of our system through various inspection methods and through our system improvement programs.

kids' sports teams and boards, enjoy cooking and trying new foods, being the biggest cheerleader at my kids' sports events, reading, and spending time with friends.

**Favorite part of the job:** My favorite part of my job is the ability to work with so many different groups and audiences. As a cooperative communicator, we work with all employees, members, community officials and legislators. No one day is ever the same! As an electric distribution cooperative, we provide the essential service of electricity, but also prioritize making our community a better place for our members.

